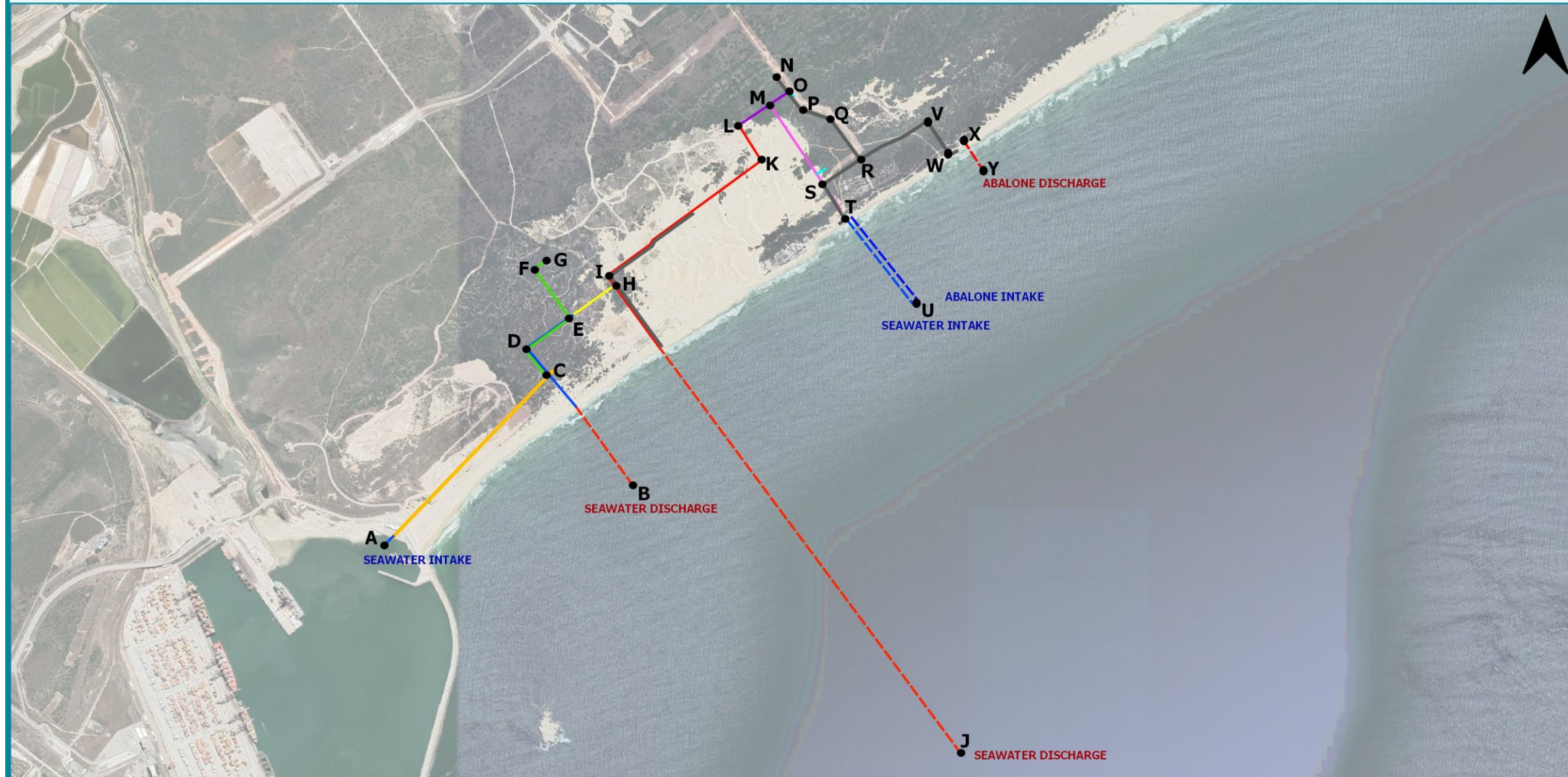


APPENDIX 16: COORDINATES OF THE PROPOSED DEVELOPMENT

PROJECT NAME: MARINE INTAKE AND OUTFALL INFRASTRUCTURE SERVITUDE PROJECT, ZONE 10, COEGA SEZ, EASTERN CAPE PROVINCE, SOUTH AFRICA

MAP TITLE: LAYOUT COORDINATE MAP



MAP DETAILS:

Drawn by: Nicole Wienand
Date: November 2020
Datum: WGS 84



SCALE: 1:30 000

LEGEND:

- | | | |
|-----------------------------|--|---|
| Proposed Development | — Low volume Seawater Supply to LNG Gas Hub and route for Wastewater Outfall | — Servitude |
| --- Seawater Discharge | — Mariculture Supply Servitude | — Seawater Intake for Gas Projects |
| --- Seawater Intake | — Seawater Intake Servitude (Desalination, Mariculture, Other) | — Connection from Power Plant to Outfall and Intake and LNG Gas Hub |
| — Brine Discharge Servitude | — Seawater Discharge from Gas Projects | — Stormwater Infrastructure |

Figure A.16: Corner Point Coordinates of the proposed development.

Table A16: Coordinates of the corner points of the proposed development.

Point	Latitude	Longitude
A	33°47'45.63"S	25°41'40.34"E
B	33°47'34.81"S	25°42'34.28"E
C	33°47'14.46"S	25°42'15.69"E
D	33°47'9.93"S	25°42'10.68"E
E	33°47'4.05"S	25°42'20.08"E
F	33°46'55.26"S	25°42'12.19"E
G	33°46'53.83"S	25°42'14.40"E
H	33°46'58.14"S	25°42'29.81"E
I	33°46'56.37"S	25°42'28.40"E
J	33°48'23.30"S	25°43'46.24"E
K	33°46'35.57"S	25°43'2.12"E
L	33°46'28.95"S	25°42'57.13"E
M	33°46'24.87"S	25°43'3.58"E
N	33°46'20.46"S	25°43'5.61"E
O	33°46'22.52"S	25°43'7.71"E
P	33°46'25.58"S	25°43'10.48"E
Q	33°46'27.38"S	25°43'16.90"E
R	33°46'34.90"S	25°43'23.66"E
S	33°46'39.31"S	25°43'15.56"E
T	33°46'45.71"S	25°43'20.41"E
U	33°47'0.76"S	25°43'35.75"E
V	33°46'27.75"S	25°43'38.26"E
W	33°46'33.66"S	25°43'43.19"E
X	33°46'31.23"S	25°43'46.17"E
Y	33°46'36.26"S	25°43'50.31"E