

APPENDIX B- PHOTOGRAPHS



Figure 1:View of general surroundings in the project area.



Figure 2:Flat, sandy to gravelly terrain within the Soutrivier South project area on Farm RE/195.



Figure 3: Typical rocky dolerite outcrop and vegetation observed.

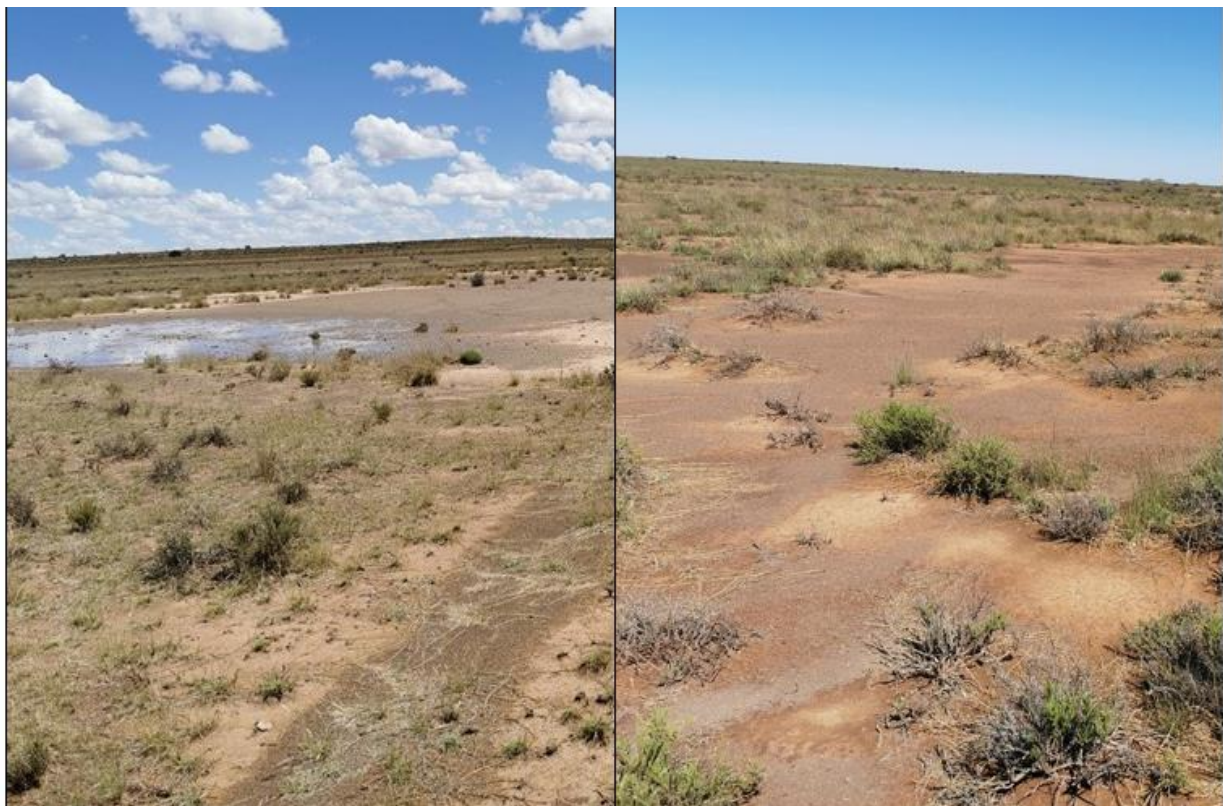


Figure 4: Typical alluvial area with standing water and sparse vegetation.



Figure 5: Typical transformed area associated with a dwelling and an unpaved gravel road